

DELO[®]-PUR 9692

polyurethane | 2C | room-temperature-curing

very good media resistance, flow-resistant, suitable for side-by-side cartridges, pasty, filled

Special features of product

- compliant with RoHS Directive 2015/863/EU
- compliant with limits of VOC content in adhesive acc. to GB33372-2020
- passes ANSI/UL 94 HB Flame Test
- Component B is humidity-sensitive

Typical area of use

- -40 - 125 °C
- glass/metal bondings
- mixed bondings with plastics

Curing

Curing time

until initial strength at rt approx. +23 °C tensile shear strength 1 - 2 MPa	30	min
until functional strength at rt approx. +23 °C tensile shear strength > 10 MPa	2	h
until final strength at rt approx. +23 °C	72	h
until functional strength at +80 °C tensile shear strength > 10 MPa	5	min
until final strength at +80 °C	10	min

Processing

Mixing ratio A : B - volume	1 : 1
Mixing ratio A : B - weight	1 : 1
Processing time after mixing	
in 100 g batch at rt approx. +23 °C	5 min
Storage life in unopened original container	
at +15 °C to +30 °C	6 month(s)

Technical properties

Color in cured condition in 1 mm layer thickness	black	
Filler particle type	minerals	
Density of component A	1.47	g/cm ³
Density of component B	1.43	g/cm ³

Parameters

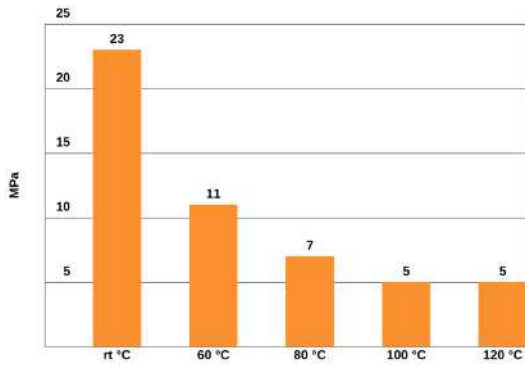
Tensile shear strength <i>by the criteria of DIN EN 1465 AI AI Pretreatment: sand-blasted at approx. +23 °C 24 h</i>	16	MPa
Tensile shear strength <i>by the criteria of DIN EN 1465 AI AI Pretreatment: sand-blasted at approx. +23 °C 72 h</i>	23	MPa
Peel resistance <i>DELO Standard 38 Steel Steel Pretreatment: sand-blasted at approx. +23 °C 168 h</i>	6	N/mm
Tensile strength <i>by the criteria of DIN EN ISO 527 at approx. +23 °C 168 h</i>	20	MPa
Elongation at tear <i>by the criteria of DIN EN ISO 527 at approx. +23 °C 168 h</i>	3	%
Young's modulus <i>by the criteria of DIN EN ISO 527 at approx. +23 °C 168 h</i>	1500	MPa
Shore hardness D <i>by the criteria of DIN EN ISO 868 at approx. +23 °C 168 h</i>	75	
Ball indentation hardness <i>by the criteria of DIN EN ISO 2039-1</i>	60	MPa
Coefficient of linear expansion <i>DELO Standard 26 TMA Evaluation T: 30 °C - 140 °C at approx. +23 °C</i>	153	ppm/K
Water absorption <i>by the criteria of DIN EN ISO 62 Layer thickness: 4 mm at approx. +23 °C 168 h Type of storage: Media Medium: Distilled water Storage temperature: at approx. +23 °C Duration: 24 h</i>	0.3	wt. %
Decomposition temperature <i>DELO Standard 36 at approx. +23 °C 168 h</i>	194	°C
Surface resistance <i>by the criteria of DIN EN 62631-3-2</i>	>1E12	Ohm

Dielectric strength 12.3 kV/mm
by the criteria of DIN EN 60243-1

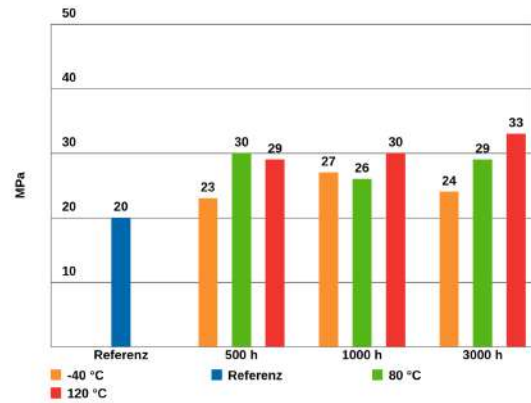
Comparative Tracking Index M 600
by the criteria of DIN EN 60112

spezifischer Durchgangswiderstand >1E13 Ohm·cm
by the criteria of VDE 0303-30 | liquid

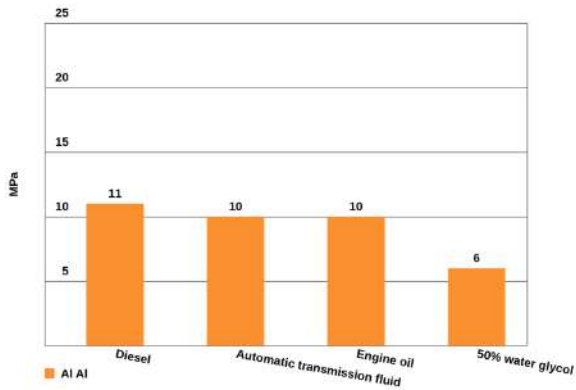
Tensile shear strength measured at the stated temperatures
 Substrates: Al/Al, based on DIN EN 1465



Tensile strength after thermal storage, based on DIN EN ISO 527

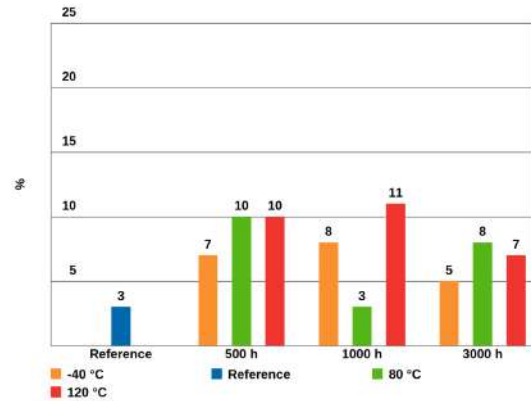


Compression shear strength after media storage for 1000 h

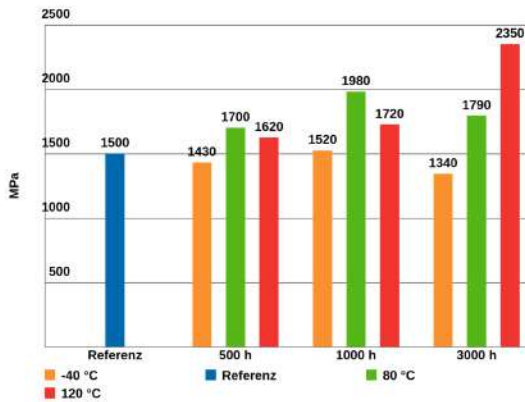


DELO Standard 5

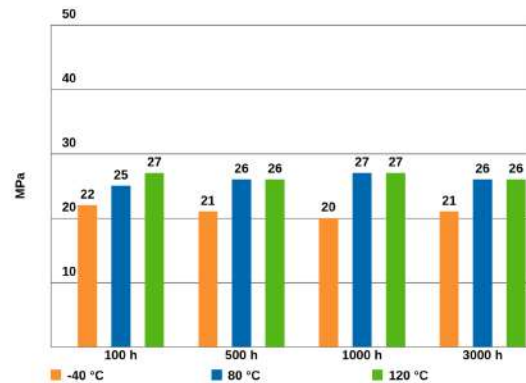
Elongation at tear after temperature storage, by the criteria of DIN EN ISO 527



Young's modulus after thermal storage
Curing / RT



Tensile shear strength after thermal storage
Substrates: Al/Al, by the criteria of DIN EN 1465



Converting table

°F	= (°C x 1.8) + 32	1 MPa	= 145.04 psi
1 inch	= 25.4 mm	1 GPa	= 145.04 ksi
1 mil	= 25.4 µm	1 cP	= 1 mPa·s
1 oz	= 28.3495 g	1 N	= 0.225 lb

General curing and processing information

The curing time stated in the technical data was determined in the laboratory. It can vary depending on the adhesive quantity and component geometry and is therefore a reference value. Unless otherwise specified, the values were measured after 168 h at approx. 23 °C / 50 % r. h., and the values of heat-cured samples were measured after 24 h at approx. 23 °C / 50 % r. h.

General

The data and information provided are based on tests performed under laboratory conditions. Reliable information about the behavior of the product under practical conditions and its suitability for a specific purpose cannot be concluded from this. It is the customer's responsibility to test the suitability of a product for the intended purpose by considering all specific requirements and by applying standards the customer deems suitable (e. g. DIN 2304-1). Type, physical and chemical properties of the materials to be processed with the product, as well as all actual influences occurring during transport, storage, processing and use, may cause deviations in the behavior of the product compared to its behavior under laboratory conditions. All data provided are typical average values or uniquely determined parameters measured under laboratory conditions. The data and information provided are therefore no guarantee for specific product properties or the suitability of the product for a specific purpose.

Nothing contained herein shall be construed to indicate the non-existence of any relevant patents or to constitute a permission, encouragement or recommendation to practice any development covered by any patents, without permission of the owner of this patent.

All products provided by DELO are subject to DELO's General Terms of Business. Verbal ancillary agreements are deemed not to exist.

Instructions for use

You can find further details in the instructions for use.
The instructions for use are available on www.DELO-adhesives.com.
We will be pleased to send them to you on demand.

Occupational health and safety

See material safety data sheet.

Specification

Nothing contained in this Technical Datasheet shall be interpreted as any express warranty or guarantee. This Technical Datasheet is for reference only and does not constitute a product specification. Please ask our responsible Sales Engineer for the applicable product specification which includes defined ranges. DELO is neither liable for any values and content of this Technical Datasheet nor for oral or written recommendations regarding the use, unless otherwise agreed in writing. This limitation of liability is not applicable for damages resulting from intent, gross negligence or culpable breach of cardinal obligations, nor shall it apply in case of death or personal injury or in case of liability under any applicable compulsory law.

CONTACT